



Nebraska Association of  
**School Boards**

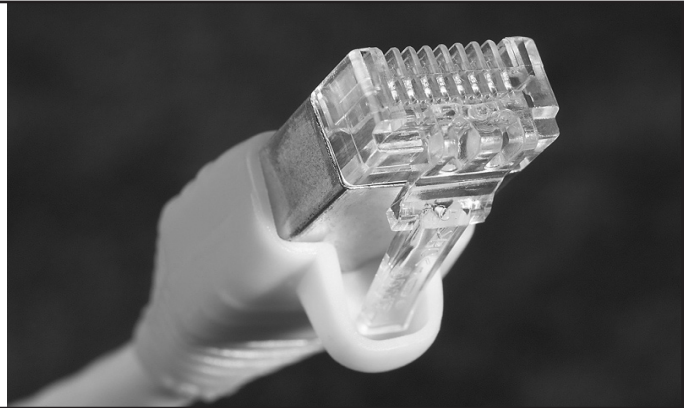
1311 Stockwell Street, Lincoln, NE 68502 —  
Website: [www.nasbonline.org](http://www.nasbonline.org)

*Return Service Requested*

Non-profit org.  
U.S. Postage  
PAID  
Nebraska Assn.  
of School Boards

## GOT NETWORK?

**Connect With Colleagues At  
NASB Area Membership Meetings**



### The 2011 NASB Area Membership Meetings

Aug. 23 in Valentine  
Aug. 24 in Gering  
Aug. 25 in North Platte

Aug. 31 in York  
Sept. 7 in Kearney  
Sept. 14 in Beatrice

Sept. 21 in Fremont  
Sept. 28 in Norfolk

*Register online at [www.nasbonline.org](http://www.nasbonline.org)*



## The School Board Member's “Back to School” Meeting!

### Connect with your colleagues — Register Now!

A new school year is starting, and while your staff is preparing and planning for the challenges a new year brings, so too should your school board be connecting with colleagues from throughout the region to discuss issues that will impact your school and your board.

The NASB Area Membership Meetings provide an annual kick-off to the board member's school year with an array of topics full of take-away ideas for your school's leadership team, including: Board and district accountability, board member mentoring, advocating for your district, promoting a safe school environment, policies as they relate to parental rights, and two sessions designed to demonstrate the newest electronic management options available to NASB members (from our expanded Negotiations Software to the newest eFunds payment system).

There will be ample opportunities for networking from the beginning of registration until we adjourn from the dinner program not later than 8:15 p.m.

The fee for the 2011 NASB Area Membership Meetings is \$55, which includes dinner. The fee also includes all break refreshments and workshop materials. Don't forget that this meeting is eligible for the redemption of your district's *NASB Reward certificates* which were distributed to your board president upon receipt of your membership dues in April.

The major cost of this workshop is the meal, so we must ask that cancellations be made as soon as possible if a conflict is realized. Cancellations will be subject to a \$20 processing fee. No refunds for cancellations after the deadlines. See the next page for deadline dates.



## The Schedule...

### Once We're All On-Site

4:45 p.m. Registration

5 to 5:25 p.m. Opening Session  
 NASB President Richard Zimmerman and region directors will introduce members to the new NASB website and members' portal. Discussion will also center on ways NASB can be of assistance to your leadership team.

5:30 p.m. Skill-Building Session I

6:20 p.m. Skill-Building Session II

7:10 to 8:15 p.m. Dinner and Awards Presentation  
 The after-dinner program will feature an awards presentation and information about the NASB region elections. Prizes will again be awarded as part of our Membership Quiz Bowl.



## The Curriculum...

Date	Meeting Locations
August 23	Meeting: Valentine Rural H.S., Dinner: Niobrara Lodge, 803 W. Hwy. 20
August 24	Gering Civic Center, 1050 M Street
August 25	North Platte Quality Inn & Suites (Register for first three meetings by August 16)
August 31	Meeting: York Middle School (Register by August 25)
September 7	Kearney Holiday Inn, 110 2nd Avenue (Register by September 1)
September 14	Meeting: Beatrice High School Dinner: Holiday Inn Express, 4005 N. 6th St. (Register by September 8)
September 21	Fremont Middle School Dinner: Fremont Golf Club, 2710 Somers Ave. (Register by September 15)
September 28	Norfolk Lifelong Learning Center 801 East Benjamin Ave. (Register by September 22)

**Personnel Management Using ONE System** – Sallie Svatora  
 During this session, you will have an opportunity to see a demonstration of a unique Personnel System to manage your certificated and non-certificated staff in ONE location. Negotiations, contracts, personnel budget, extra-duty, array, cost projections, education, contact info, NSSRS and more are all within one system to eliminate duplication, improve efficiency and increase accuracy.

**Giving Members a Voice in Legislation** – John Bonaiuto/Brian Hale  
 In this session, we will review the NASB process of taking member suggestions and developing them into a legislative agenda for the organization. We will also discuss ways to mobilize the membership and help board members participate intelligently in the policy making process.

**Parental Rights and School Policy** – Jim Luebbe  
 Parents, like adolescents, are often demanding about, and always certain of, their rights. Good policy should clarify both the scope and the limitations of those rights to help you deal with overreaching demands when assertive parents put you on the spot.

**New Board Members' Learning Curve** – Marcia Herring/Burma Kroger  
 Eight months after joining your board, you may have discovered that the reality of board service doesn't reflect your earlier expectations. Join us to review principles of boardmanship and tools for board and district accountability.

**Mentoring: A Tool For Building a Strong Board** – Marcia Herring, Burma Kroger  
 Dealing with critical issues may result in a divided board. Mentoring through learning conversations among board members ensures best practice and improved service. Join us to learn more about the funda-

**Safety Tools and Training for Schools** – Jim Luebbe/Megan Boldt  
 NASB has developed a partnership with SafeSchools to provide valuable new training and administrative tools to our members. Learn how your district can use this tremendous resource to create communication amongst school staff and insure a legal trail for your protection.

**Legislative Issues For 2012 Session** – John Bonaiuto/Brian Hale  
 In this session, we will review the work of the NASB Legislation Committee and talk about the issues facing public education when the 2012 Legislature reports for work.

# 2011 Area Membership Meetings Registration Form

Please register online at [www.nasbonline.org](http://www.nasbonline.org) — FAX 402/423-4961 — [schoolboards@nasbonline.org](mailto:schoolboards@nasbonline.org)

School District/ESU	Registrants' Full Name	Position: Supt., Admin., Brd. Mem., Spouse, Other-(Specify)	Valentine Aug. 23	Gering Aug. 24	No. Platte Aug. 25	York Aug. 31	Kearney Sept. 7	Beatrice Sept. 14	Fremont Sept. 21	Norfolk Sept. 28	Districts may use their NASB Reward certificate for free registration							Grand Total					

If you have questions, contact the NASB Office at 800/422-4572